



Accountability Report

Results-Based Evaluation System

Issued 2009–10



Grayson Elementary School

Dr. Christopher Ray, *Principal*

Calvin Watts, *Area Superintendent*

Gwinnett County Public Schools (GCPS) has developed an accountability system for improving schools called the Results-Based Evaluation System (RBES). RBES fairly and systematically measures a school’s progress, providing a process that clearly communicates expectations; reviews, monitors, and supports school performance; and evaluates that performance.

Grayson’s school council and school leaders collaborated on the highlights included in this accountability report, which also serves as the school’s annual report. The report provides consolidated information on the school’s effectiveness, based on multiple measures and student characteristics. **Please review this report to learn more about the school’s improvement efforts and progress.**

CONTENTS:

- Key Results on Improvement Plans
- 2008–09 Results:
 - GCPS Promotion Requirements... Grade 4 Gateway Grade 5 Writing Gateway
 - State Promotion Requirements... Grade 3 CRCT Grade 5 CRCT
 - CRCT and Adequate Yearly Progress
- 2008–09 Highlights
- Staff Data
- Student Data
- School Safety Perceptions

Key Results from 2008–09 Local School Plans for Improvement

Local School Plans for Improvement are plans developed locally by school administrators, teachers, and parent advisory groups. These plans outline school goals.

Goal: To improve student achievement in reading, mathematics, and writing on local, state, and national assessments.

Results: Grayson Elementary School has met its goal of raising student achievement in the core academic areas of reading, math, and writing for the 2008–09 school year. The entire faculty, support staff, students, and community have pulled together to raise student achievement. We are most proud that our students are meeting the standards. They have shown higher levels of achievement as more of our students performed in the Exceeds Standards level on the Criterion-Referenced Competency Tests (CRCT).

Goal: To review safety and security plans.

Results: The Georgia Emergency Management Agency (GEMA) has visited and reviewed the school site and emergency plans every other year. Recommendations have been made and implemented to enhance campus security.

Tell us what you think about this report.

Click here to complete a questionnaire online.

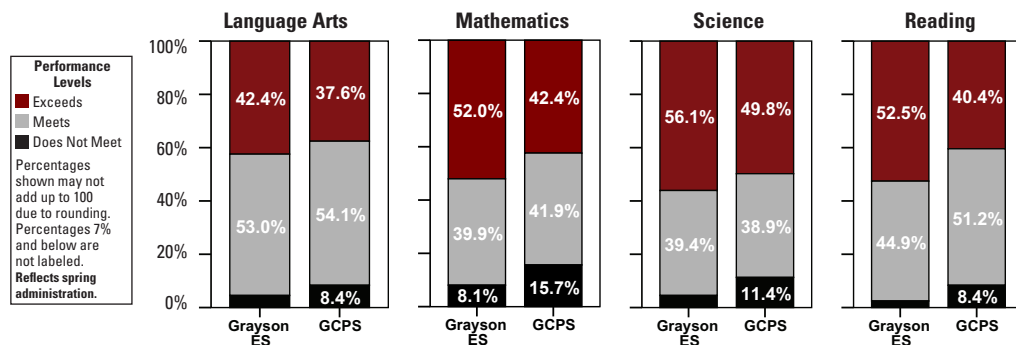
Gwinnett schools measure student learning of the school system's curriculum—the Academic Knowledge and Skills (AKS)—in a number of ways to ensure students have learned the AKS and will be successful in the next grade. One measure is the state's Criterion-Referenced Competency Tests (CRCT), which compares student achievement to state standards in several subject areas for grades 1–8. Georgia students in grades 3 and 5 also take a state writing assessment. Test results are used by teachers to identify individual student strengths and weaknesses and by the state to gauge the quality of education throughout Georgia.

2008–09 Results: Gwinnett County Public Schools Promotion Requirements (Grades 4 and 5)

In Gwinnett, state tests taken in grades 4 and 5 are used as Gateway assessments and results are used to determine whether a student is prepared for the next grade level. Following are results for Grayson Elementary for these local promotion requirements.

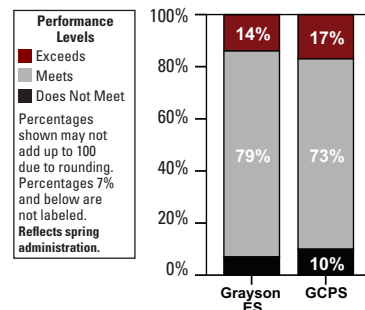
Grade 4 Gateway: Language Arts, Mathematics, Science, and Reading CRCT Subtests

For 2008–09, a Gwinnett 4th grader was required to meet grade-level expectations on the CRCT in four subject areas—language arts, mathematics, science, and reading—in order to earn promotion. Due to the revisions in the state's 4th grade social studies curriculum, CRCT results in that subject area were not used as a promotion requirement for 2008–09. Students' test performance on the Grade 4 Gateway falls into three levels of mastery of the state's curriculum: Exceeds, Meets, Does Not Meet.



Grade 5 Gateway: Georgia Grade 5 Writing Assessment

In addition to earning passing grades, GCPS 5th graders were required to make a passing score on the Georgia Grade 5 Writing Assessment, which is a Gateway test in Gwinnett. This chart reflects how well Grayson Elementary's students did on the test in 2008–09, with 93% of Grayson 5th graders passing the writing Gateway on the first try. (Data reflects achievement of all students, including special education students and students with limited English who were not required to pass the Gateway for promotion.)



2008–09 Results: State Promotion Requirements (Grades 3 and 5)

The state also has established promotion requirements for selected grade levels. The table at the right reflects the percentage of Grayson Elementary students in grades 3 and 5 who met grade-level expectations on the state's CRCT in order to earn promotion.

	% of Students Who Passed CRCT Subtests Required for Promotion*		
	Grayson	GCPS	State
3rd Grade Reading CRCT	96	90	88
5th Grade Reading CRCT	95	91	88
5th Grade Math CRCT	90	86	79

*Reflects spring administration

2008–09 Results: Criterion-Referenced Competency Tests and Adequate Yearly Progress

Schools earn Adequate Yearly Progress (AYP) status by meeting a series of performance goals that every school, system, and the state as a whole must achieve under the federal No Child Left Behind Act. In Georgia, AYP for elementary schools is determined using results from the Criterion-Referenced Competency Tests (CRCT) in reading/English language arts and mathematics. These tests measure the knowledge and skills of students by assessing how well students have learned the state's curriculum. To make AYP, elementary schools must meet state-set student achievement goals and attendance standards for all students, and for all subgroups that have 40 or more students or 10% of the students in grades 3–5, whichever is greater (with a 75-student cap). In addition, schools must test 95% of all students and of all subgroups with 40 or more students. Georgia reports achievement scores for every subgroup with 10 or more students. However, the state only considers results for subgroups that meet the state-set minimum number of students in determining a school's AYP status.

See the table at the top of the next page for a detailed breakdown of Grayson's CRCT achievement in each AYP subgroup.

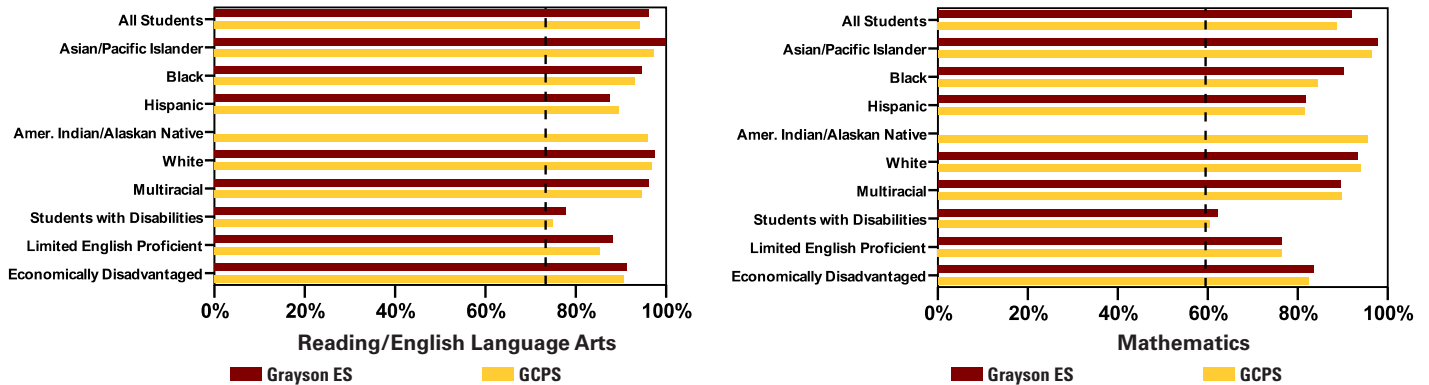
Grayson Elementary AYP Results by Subgroup

Grayson Elementary achieved AYP	All Students	Asian/Pacific Islander	Black	Hispanic	American Indian/Alaskan	White	Multi-Racial	Students with Disabilities	Limited English Proficient	Economically Disadvantaged
Math Participation	Achieved	Achieved	Achieved	Achieved	·	Achieved	Achieved	Achieved	·	Achieved
Math Performance	Achieved	·	Achieved	·	·	Achieved	·	·	·	Achieved
Reading/ELA Participation	Achieved	Achieved	Achieved	Achieved	·	Achieved	Achieved	Achieved	·	Achieved
Reading/ELA Performance	Achieved	·	Achieved	·	·	Achieved	·	·	·	Achieved

This school **achieved** the state's attendance standard for all students.

• In the table above, only results for subgroups that meet the state-set minimum number of students are used to determine AYP

Percentage of Students Meeting or Exceeding State Standards



Note: In charts above, only subgroups with 10 or more students are reported. Results for groups smaller than the state minimum are not considered for AYP. The dotted line on each graph represents the state's AYP standard in 2009. The standards will increase to 100% by 2014. The charts above reflect spring and summer test administrations.

Grayson Elementary students continue to do well on the CRCT, with percentages of students meeting and exceeding standards above the system averages in both reading/English language arts and mathematics. The school made Adequate Yearly Progress (AYP), meeting all of the state's academic goals, testing participation requirements, and attendance standards.

A Message from the Principal About Student Achievement and Academic Initiatives

Over the past year, the Grayson Elementary community has worked to revise the school's mission statement. With input from teachers, support staff, students, and parents, we have developed the following new mission statement for Grayson Elementary School:

*Grayson Elementary School
is a successful community of lifelong learners
who strive daily for excellence to make a difference in the world.*

Each day we work to fulfill this mission statement through the many intervention and extension activities that enhance student achievement. Students and staff are reminded during our morning announcements of our mission statement and our school system's core business of teaching and learning. Students at Grayson Elementary School strive for excellence daily in all their activities.

As a school, we have completed a great transformation in our instructional program. Teachers are participating in highly collaborative groups to review data and plan instruction. Staff development activities are aligned to support the teachers in the classroom. Intervention and extension activities are built into the instructional program to ensure that all students are being instructed at the highest level. Examples include the work of our FOCUS gifted education teachers, Odyssey of the Mind teams, Response to Intervention meetings, and our Student Support Team processes.

All grade levels follow the AKS-Continuous Quality Improvement (AKS-CQI) Model which incorporates data analysis, a year-long instructional calendar, team time, target lessons, and frequent informal assessments to gauge students' progress in mastering objectives. High expectations are the norm at Grayson Elementary where all students will achieve their greatest potential.

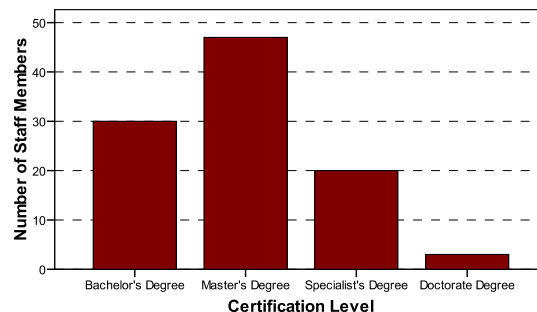
Grayson Elementary has identified language arts and writing as areas of improvement for the coming year. A plan has been developed to assist students in the writing process through teaching language arts within the context of writing. We are confident that this plan will produce positive results as we move forward.

Grayson Elementary School

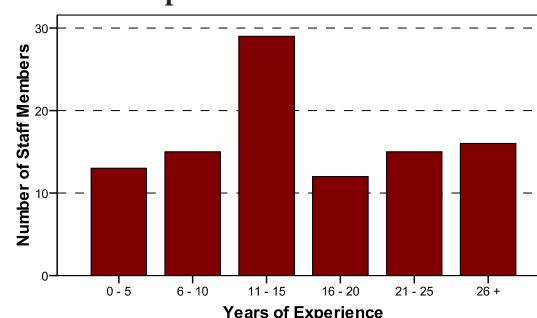
Other 2008–09 Highlights...

- Grayson's Parent Teacher Association (PTA) continues to support school-based programs, teacher and student supplies, and family assistance.
- Grayson's PTA earned state honors as a Model PTA.
- Grayson supported community fundraising efforts through United Way, Relay For Life, American Heart Association, American Red Cross, and other community-based initiatives.
- Each day Grayson Elementary Television (GETV) produced student-run news programs that highlighted school and community events.
- Grayson participated in a program to match our students with high school students for mentoring and academic assistance.
- Grayson Elementary School is a job site for the Supported Training and Rehabilitative Instruction in Vocational Education (STRIVE) program, a work program for young adults with special needs.
- Grayson celebrated the achievements of its five Odyssey of the Mind teams.
- All faculty and staff participated in at least 20 hours of staff development over the course of the school year.
- Camp Invention, a science enrichment camp, provided an exciting and fun experience for more than 45 students during the summer.
- Grayson Elementary's student extension activities and clubs include: National Elementary Honor Society, Student Council, Honor Chorus, Premier Chorus, 2nd and 3rd Grade Chorus, 4th and 5th Grade Chorus, Recycling Rams, Gardening Club, Chess Club, Yearbook Club, Martial Arts Club, Drama Club, Ram Buddies, Safety Patrol, Kindergarten Camp, and Art Camps.
- Students have the opportunity to earn special recognition for the Principal's Honor Roll (straight A's), Honor Roll (A's and B's), Perfect Attendance, meeting Achievement Goals, and Grayson Elementary 9-week Citizens.

2008–09 Staff Data Staff Certification Level



Experience in Education



2005–2009 Student Data

	School Year			
	05-06	06-07	07-08	08-09
Enrollment	1,375	1,488	1,561	1,266
Asian/Pacific Islander	5%	5%	7%	6%
Black	23%	28%	30%	24%
Hispanic	7%	7%	7%	7%
American Indian/Alaskan Native	0%	0%	1%	0%
White	62%	57%	52%	56%
Multiracial	3%	4%	5%	6%
Special Education	8%	10%	10%	10%
ESOL	3%	4%	4%	4%
Free/Reduced Lunch	22%	23%	24%	25%
Average Attendance	97%	97%	97%	97%

School Safety Perceptions

Based on responses to 2008–09 RBES Perception Survey...

- 88.4% of students agreed or strongly agreed that they felt safe at Grayson Elementary.
- 92.3% of parents agreed or strongly agreed that their child's school was safe.

The mission of Gwinnett County Public Schools is to pursue excellence in academic knowledge, skills, and behavior for each student, resulting in measured improvement against local, national, and world-class standards.

Grayson Elementary School

460 Grayson Parkway • Grayson, GA 30017
(770) 963-7189 • www.graysonelementary.org
Dr. Christopher Ray, Principal

Gwinnett County Public Schools

437 Old Peachtree Rd., NW • Suwanee, GA 30024-2978
www.gwinnett.k12.ga.us

2009 Gwinnett County Board of Education

Daniel D. Seckinger, 2009 Chairman;
Dr. Mary Kay Murphy, 2009 Vice Chairman;
Carole C. Boyce; Dr. Robert McClure; and Louise Radloff
J. Alvin Wilbanks, CEO/Superintendent